

GLOBES



6" Smooth Acrylic

DESCRIPTION

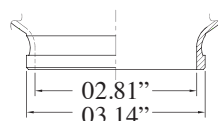
Norton Industries smooth spheres are designed for commercial and residential post top and pendant applications and are available with fitter neck, screw neck and neckless openings.

MATERIALS

- **Acrylic** - UV resistant with continuous operating temperature up to 90°C and transmittance of 92% (application dependent). Acrylic spheres are available in clear, white, bronze or smoke.
- **LD Acrylic (Visual Comfort)** - UV resistant with continuous operating temperature up to 90°C and transmittance of 90% to 94% (application dependent).

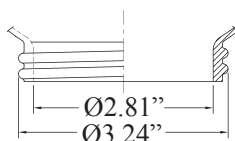


FITTER NECK (F)



ITEM NO.	DIA (SPHERE)	ID (NECK)	OD (NECK)	MATERIAL	COLOR
20006-CL-3F	6"	2.81"	3.14"	Acrylic	Clear
20006-WH-3F	6"	2.81"	3.14"	Acrylic	White
20006-BR-3F	6"	2.81"	3.14"	Acrylic	Bronze
20006-SM-3F	6"	2.81"	3.14"	Acrylic	Smoke
20006-LD-3F	6"	2.81"	3.14"	LD Acrylic	VC Frost

SCREW NECK (S)



ITEM NO.	DIA (SPHERE)	ID (NECK)	OD (NECK)	MATERIAL	COLOR
20006-CL-3S	6"	2.81"	3.24"	Acrylic	Clear
20006-WH-3S	6"	2.81"	3.24"	Acrylic	White
20006-BR-3S	6"	2.81"	3.24"	Acrylic	Bronze
20006-SM-3S	6"	2.81"	3.24"	Acrylic	Smoke
20006-LD-3S	6"	2.81"	3.24"	LD Acrylic	VC Frost

CUSTOM (XX)



ITEM NO.	DIA (SPHERE)	MIN (OPENING)	MAX (OPENING)	MATERIAL	COLOR
20006-CL-XX	6"	2.81"	4.50"	Acrylic	Clear
20006-WH-XX	6"	2.81"	4.50"	Acrylic	White
20006-BR-XX	6"	2.81"	4.50"	Acrylic	Bronze
20006-SM-XX	6"	2.81"	4.50"	Acrylic	Smoke
20006-LD-XX	6"	2.81"	4.50"	LD Acrylic	VC Frost

MAXIMUM TEMPERATURES

No warranty or guarantee is expressed or implied as only the user can determine the suitability of a product for his or her purpose.

Maximum working temperature is 90° C for Acrylic and between 100° C and 125° C for Polycarbonates, depending on products chosen.

Actual wattage ratings are influenced by many factors including Fixture Type, Bulb Location and Ambient Temperature.

ITEM NUMBER SUFFIX CODES

STYLE NUMBER	COLOR	NECK
20006 = Acrylic	CL = CLEAR WH = WHITE BR = BRONZE SM = SMOKE LD = VC FROST	3S = 3.24" Screw 3F = 3.14" Fitter XX = Customized

Dimensions are nominal

6" Prismatic Acrylic

DESCRIPTION

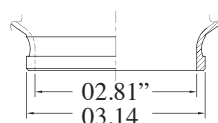
Norton Industries prismatic spheres are designed for commercial and residential post top and pendant applications and are available with fitter neck, screw neck and neckless openings.

MATERIALS

- **Acrylic** - UV resistant with continuous operating temperature up to 90°C and transmittance of 92% (application dependent). Acrylic spheres are available in clear.

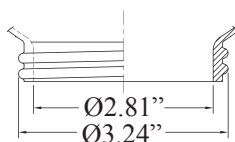


FITTER NECK (F)



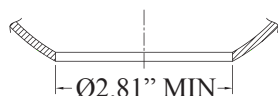
ITEM NO.	DIA (SPHERE)	ID (NECK)	OD (NECK)	MATERIAL	COLOR
21006-CL-3F	6"	2.81"	3.14"	Acrylic	Clear

SCREW NECK (S)



ITEM NO.	DIA (SPHERE)	ID (NECK)	OD (NECK)	MATERIAL	COLOR
21006-CL-3S	6"	2.81"	3.24"	Acrylic	Clear

CUSTOM (XX)



ITEM NO.	DIA (SPHERE)	MIN (OPENING)	MAX (OPENING)	MATERIAL	COLOR
21006-CL-XX	6"	2.81"	4.50"	Acrylic	Clear

MAXIMUM TEMPERATURES

No warranty or guarantee is expressed or implied as only the user can determine the suitability of a product for his or her purpose.

Maximum working temperature is 90° C for Acrylic and between 100° C and 125° C for Polycarbonates, depending on products chosen.

Actual wattage ratings are influenced by many factors including Fixture Type, Bulb Location and Ambient Temperature.

ITEM NUMBER SUFFIX CODES

STYLE NUMBER	COLOR	NECK
21006 = Acrylic	CL = CLEAR	3S = 3.24" Screw 3F = 3.14" Fitter XX = Customized

Dimensions are nominal

8" Smooth Acrylic

DESCRIPTION

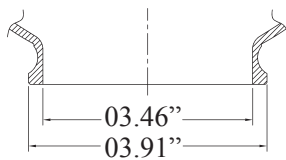
Norton Industries smooth spheres are designed for commercial and residential post top and pendant applications and are available with fitter neck, twist lock neck, screw neck and neckless openings.

MATERIALS

- **Acrylic** - UV resistant with continuous operating temperature up to 90°C and transmittance of 92% (application dependent). Acrylic spheres are available in clear, white, bronze or smoke.
- **LD Acrylic (Visual Comfort)** - UV resistant with continuous operating temperature up to 90°C and transmittance of 90% to 94% (application dependent).

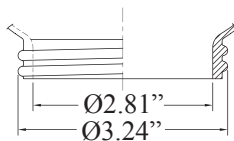


FITTER NECK (F)



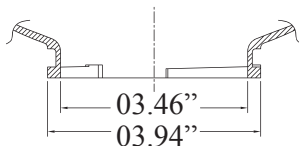
ITEM NO.	DIA (SPHERE)	ID (NECK)	OD (NECK)	MATERIAL	COLOR
20008-CL-4F	8"	3.46"	3.91"	Acrylic	Clear
20008-WH-4F	8"	3.46"	3.91"	Acrylic	White
20008-BR-4F	8"	3.46"	3.91"	Acrylic	Bronze
20008-SM-4F	8"	3.46"	3.91"	Acrylic	Smoke
20008-LD-4F	8"	3.46"	3.91"	LD Acrylic	VC Frost

SCREW NECK (S)



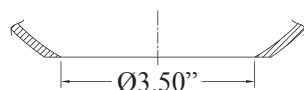
ITEM NO.	DIA (SPHERE)	ID (NECK)	OD (NECK)	MATERIAL	COLOR
20008-CL-3S	8"	2.81"	3.24"	Acrylic	Clear
20008-WH-3S	8"	2.81"	3.24"	Acrylic	White
20008-BR-3S	8"	2.81"	3.24"	Acrylic	Bronze
20008-SM-3S	8"	2.81"	3.24"	Acrylic	Smoke

TWIST LOCK (T)



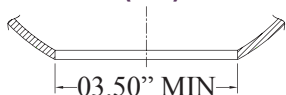
ITEM NO.	DIA (SPHERE)	ID (NECK)	OD (NECK)	MATERIAL	COLOR
20008-CL-4T	8"	3.46"	3.94"	Acrylic	Clear
20008-WH-4T	8"	3.46"	3.94"	Acrylic	White
20008-BR-4T	8"	3.46"	3.94"	Acrylic	Bronze
20008-SM-4T	8"	3.46"	3.94"	Acrylic	Smoke
20008-LD-4T	8"	3.46"	3.94"	LD Acrylic	VC Frost

NECKLESS (N)



ITEM NO.	DIA (SPHERE)	ID (NECK)	OD (NECK)	MATERIAL	COLOR
20008-CL-3N	8"	3.50"	N/A	Acrylic	Clear
20008-WH-3N	8"	3.50"	N/A	Acrylic	White
20008-BR-3N	8"	3.50"	N/A	Acrylic	Bronze
20008-SM-3N	8"	3.50"	N/A	Acrylic	Smoke
20008-LD-3N	8"	3.50"	N/A	LD Acrylic	VC Frost

CUSTOM (XX)



CUSTOM OPENING

See ACCESSORIES section for all optional attachments

ITEM NO.	DIA (SPHERE)	MIN (OPENING)	MAX (OPENING)	MATERIAL	COLOR
20008-CL-XX	8"	3.50"	5.50"	Acrylic	Clear
20008-WH-XX	8"	3.50"	5.50"	Acrylic	White
20008-BR-XX	8"	3.50"	5.50"	Acrylic	Bronze
20008-SM-XX	8"	3.50"	5.50"	Acrylic	Smoke

Dimensions are nominal

OPTIONAL ACCESSORIES

Aluminum Neck Fitters



98005-A

MAXIMUM TEMPERATURES

No warranty or guarantee is expressed or implied as only the user can determine the suitability of a product for his or her purpose.
Maximum working temperature is 90° C for Acrylic and between 100° C and 125° C for Polycarbonates, depending on products chosen.
Actual wattage ratings are influenced by many factors including Fixture Type, Bulb Location and Ambient Temperature.

ITEM NUMBER SUFFIX CODES

STYLE NUMBER	COLOR	NECK
20008 = Acrylic	CL = CLEAR WH = WHITE BR = BRONZE SM = SMOKE LD = VC FROST	3S = 3.24" Screw 4F = 3.91" Fitter 4T = 3.94" Twist Lock 3N = 3.50" Neckless Opening XX = Customized

8" Smooth Polycarbonate

DESCRIPTION

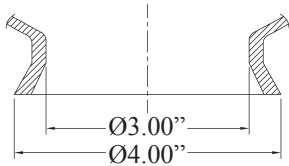
Norton Industries smooth spheres are designed for commercial and residential post top and pendant applications and are available with fitter neck and neckless openings.

MATERIALS

- **Polycarbonate** - UV stabilized with continuous operating temperature of 100°C to 125°C and high impact resistance down to -40°C, transmittance of 88% (application dependent). Polycarbonate spheres are available in clear, white, bronze or smoke.

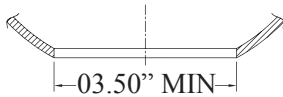


FITTER NECK (F)



ITEM NO.	DIA (SPHERE)	ID (NECK)	OD (NECK)	MATERIAL	COLOR
10008-CL-4F	8"	3.00"	4.00"	Polycarbonate	Clear
10008-WH-4F	8"	3.00"	4.00"	Polycarbonate	White
10008-BR-4F	8"	3.00"	4.00"	Polycarbonate	Bronze
10008-SM-4F	8"	3.00"	4.00"	Polycarbonate	Smoke

CUSTOM (XX)



ITEM NO.	DIA (SPHERE)	MIN (OPENING)	MAX (OPENING)	MATERIAL	COLOR
10008-CL-XX	8"	3.50"	5.50"	Polycarbonate	Clear
10008-WH-XX	8"	3.50"	5.50"	Polycarbonate	White
10008-BR-XX	8"	3.50"	5.50"	Polycarbonate	Bronze
10008-SM-XX	8"	3.50"	5.50"	Polycarbonate	Smoke

CUSTOM OPENING
See ACCESSORIES section for
all optional attachments

OPTIONAL ACCESSORIES

Aluminum Neck Fitters



98005-A

MAXIMUM TEMPERATURES

No warranty or guarantee is expressed or implied as only the user can determine the suitability of a product for his or her purpose.

Maximum working temperature is 90° C for Acrylic and between 100° C and 125° C for Polycarbonates, depending on products chosen.

Actual wattage ratings are influenced by many factors including Fixture Type, Bulb Location and Ambient Temperature.

ITEM NUMBER SUFFIX CODES

STYLE NUMBER	COLOR	NECK
10008 = Polycarbonate	CL = CLEAR WH = WHITE BR = BRONZE SM = SMOKE	4F = 4" Fitter XX = Customized

Dimensions are nominal

8" Prismatic Acrylic

DESCRIPTION

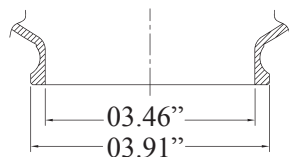
Norton Industries prismatic spheres are designed for commercial and residential post top and pendant applications and are available with fitter neck, twist lock neck, screw neck and neckless openings.

MATERIALS

- **Acrylic** - UV resistant with continuous operating temperature up to 90°C and transmittance of 92% (application dependent). Acrylic spheres are available in clear.

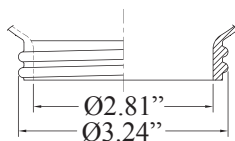


FITTER NECK (F)



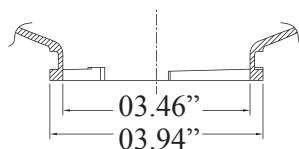
ITEM NO.	DIA (SPHERE)	ID (NECK)	OD (NECK)	MATERIAL	COLOR
21008-CL-4F	8"	3.46"	3.91"	Acrylic	Clear

SCREW NECK (S)



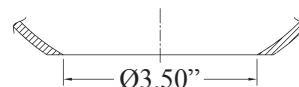
ITEM NO.	DIA (SPHERE)	ID (NECK)	OD (NECK)	MATERIAL	COLOR
21008-CL-3S	8"	2.81"	3.24"	Acrylic	Clear

TWIST LOCK (T)



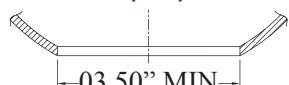
ITEM NO.	DIA (SPHERE)	ID (NECK)	OD (NECK)	MATERIAL	COLOR
21008-CL-4T	8"	3.46"	3.94"	Acrylic	Clear

NECKLESS (N)



ITEM NO.	DIA (SPHERE)	ID (NECK)	OD (NECK)	MATERIAL	COLOR
21008-CL-3N	8"	3.50"	N/A	Acrylic	Clear

CUSTOM (XX)



ITEM NO.	DIA (SPHERE)	MIN (OPENING)	MAX (OPENING)	MATERIAL	COLOR
21008-CL-XX	8"	3.50"	5.50"	Acrylic	Clear

CUSTOM OPENING
See ACCESSORIES section for
all optional attachments

Dimensions are nominal

OPTIONAL ACCESSORIES

Aluminum Neck Fitters



98005-A

MAXIMUM TEMPERATURES

No warranty or guarantee is expressed or implied as only the user can determine the suitability of a product for his or her purpose.
Maximum working temperature is 90° C for Acrylic and between 100° C and 125° C for Polycarbonates, depending on products chosen.
Actual wattage ratings are influenced by many factors including Fixture Type, Bulb Location and Ambient Temperature.

ITEM NUMBER SUFFIX CODES

STYLE NUMBER	COLOR	NECK
20008 = Acrylic	CL = CLEAR	3S = 3.24" Screw 4F = 3.91" Fitter 4T = 3.94" Twist Lock 3N = 3.50" Neckless Opening XX = Customized



10" Smooth Acrylic

DESCRIPTION

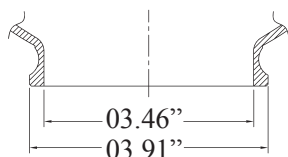
Norton Industries smooth spheres are designed for commercial and residential post top and pendant applications and are available with fitter neck, twist lock neck, and neckless openings.

MATERIALS

- **Acrylic** - UV resistant with continuous operating temperature up to 90°C and transmittance of 92% (application dependent). Acrylic spheres are available in clear, white, bronze or smoke.
- **LD Acrylic (Visual Comfort)** - UV resistant with continuous operating temperature up to 90°C and transmittance of 90% to 94% (application dependent).

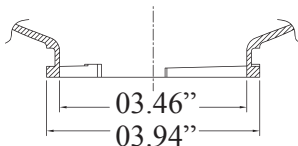


FITTER NECK (F)



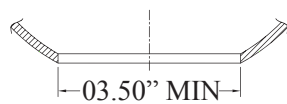
ITEM NO.	DIA (SPHERE)	ID (NECK)	OD (NECK)	MATERIAL	COLOR
20010-CL-4F	10"	3.46"	3.91"	Acrylic	Clear
20010-WH-4F	10"	3.46"	3.91"	Acrylic	White
20010-BR-4F	10"	3.46"	3.91"	Acrylic	Bronze
20010-SM-4F	10"	3.46"	3.91"	Acrylic	Smoke
20010-LD-4F	10"	3.46"	3.91"	LD Acrylic	VC Frost

TWIST LOCK (T)



ITEM NO.	DIA (SPHERE)	ID (NECK)	OD (NECK)	MATERIAL	COLOR
20010-CL-4T	10"	3.46"	3.94"	Acrylic	Clear
20010-BR-4T	10"	3.46"	3.94"	Acrylic	Bronze
20010-SM-4T	10"	3.46"	3.94"	Acrylic	Smoke
20010-LD-4T	10"	3.46"	3.94"	LD Acrylic	VC Frost

CUSTOM (XX)



CUSTOM OPENING

See ACCESSORIES section for all optional attachments



ITEM NO.	DIA (SPHERE)	MIN (OPENING)	MAX (OPENING)	MATERIAL	COLOR
20010-CL-XX	10"	3.50"	7.00"	Acrylic	Clear
20010-WH-XX	10"	3.50"	7.00"	Acrylic	White
20010-BR-XX	10"	3.50"	7.00"	Acrylic	Bronze
20010-SM-XX	10"	3.50"	7.00"	Acrylic	Smoke
20010-LD-XX	10"	3.50"	7.00"	LD Acrylic	VC Frost

OPTIONAL ACCESSORIES

Aluminum Neck Fitters



98005-A

Plastic Neck Fitters



98006-P

External Heat Shields



96005-BLK
96005-WHT

Internal Heat Shields



96104-A

Dimensions are nominal

MAXIMUM TEMPERATURES

No warranty or guarantee is expressed or implied as only the user can determine the suitability of a product for his or her purpose.

Maximum working temperature is 90° C for Acrylic and between 100° C and 125° C for Polycarbonates, depending on products chosen.

Actual wattage ratings are influenced by many factors including Fixture Type, Bulb Location and Ambient Temperature.

ITEM NUMBER SUFFIX CODES

STYLE NUMBER	COLOR	NECK
20010 = Acrylic	CL = CLEAR WH = WHITE BR = BRONZE SM = SMOKE LD = VC FROST	4F = 3.91" Fitter 4T = 3.94" Twist Lock XX = Customized

10" Smooth Polycarbonate

DESCRIPTION

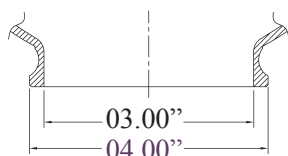
Norton Industries smooth spheres are designed for commercial and residential post top and pendant applications and are available with fitter neck and neckless openings.

MATERIALS

- **Polycarbonate** - UV stabilized with continuous operating temperature of 100°C to 125°C and high impact resistance down to -40°C, transmittance of 88% (application dependent). Polycarbonate spheres are available in clear, white, bronze or smoke.

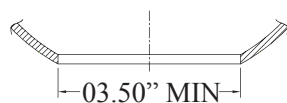


FITTER NECK (F)



ITEM NO.	DIA (SPHERE)	ID (NECK)	OD (NECK)	MATERIAL	COLOR
10010-CL-4F	10"	3.00"	4.00"	Polycarbonate	Clear
10010-WH-4F	10"	3.00"	4.00"	Polycarbonate	White
10010-BR-4F	10"	3.00"	4.00"	Polycarbonate	Bronze
10010-SM-4F	10"	3.00"	4.00"	Polycarbonate	Smoke

CUSTOM (XX)



CUSTOM OPENING
See ACCESSORIES section for
all optional attachments



ITEM NO.	DIA (SPHERE)	MIN (OPENING)	MAX (OPENING)	MATERIAL	COLOR
10010-CL-XX	10"	3.50"	6.50"	Polycarbonate	Clear
10010-WH-XX	10"	3.50"	6.50"	Polycarbonate	White
10010-BR-XX	10"	3.50"	6.50"	Polycarbonate	Bronze
10010-SM-XX	10"	3.50"	6.50"	Polycarbonate	Smoke

OPTIONAL ACCESSORIES

Aluminum Neck Fitters



98005-A

Plastic Neck Fitters



98006-P

External Heat Shields



96005-BLK
96005-WHT

Internal Heat Shields



96104-A

MAXIMUM TEMPERATURES

No warranty or guarantee is expressed or implied as only the user can determine the suitability of a product for his or her purpose.

Maximum working temperature is 90° C for Acrylic and between 100° C and 125° C for Polycarbonates, depending on products chosen.

Actual wattage ratings are influenced by many factors including Fixture Type, Bulb Location and Ambient Temperature.

ITEM NUMBER SUFFIX CODES

STYLE NUMBER	COLOR	NECK
10010 = Polycarbonate	CL = CLEAR WH = WHITE BR = BRONZE SM = SMOKE	4F = 4.00" Fitter XX = Customized

Dimensions are nominal

10" Prismatic Acrylic

DESCRIPTION

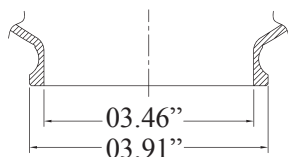
Norton Industries prismatic spheres are designed for commercial and residential post top and pendant applications and are available with fitter neck, twist lock neck and neckless openings.

MATERIALS

- **Acrylic** - UV resistant with continuous operating temperature up to 90°C and transmittance of 92% (application dependent). Acrylic spheres are available in clear.

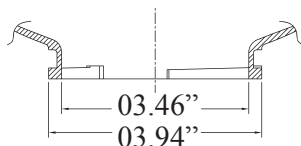


FITTER NECK (F)



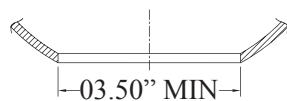
ITEM NO.	DIA (SPHERE)	ID (NECK)	OD (NECK)	MATERIAL	COLOR
21010-CL-4F	10"	3.46"	3.91"	Acrylic	Clear

TWIST LOCK (T)



ITEM NO.	DIA (SPHERE)	ID (NECK)	OD (NECK)	MATERIAL	COLOR
21010-CL-4T	10"	3.46"	3.94"	Acrylic	Clear

CUSTOM (XX)



CUSTOM OPENING

See ACCESSORIES section for all optional attachments



ITEM NO.	DIA (SPHERE)	MIN (OPENING)	MAX (OPENING)	MATERIAL	COLOR
21010-CL-XX	10"	3.50"	6.50"	Acrylic	Clear

OPTIONAL ACCESSORIES

Aluminum Neck Fitters



98005-A

Plastic Neck Fitters



98006-P

External Heat Shields



96005-BLK
96005-WHT

Internal Heat Shields



96104-A

Dimensions are nominal

MAXIMUM TEMPERATURES

No warranty or guarantee is expressed or implied as only the user can determine the suitability of a product for his or her purpose.

Maximum working temperature is 90° C for Acrylic and between 100° C and 125° C for Polycarbonates, depending on products chosen.

Actual wattage ratings are influenced by many factors including Fixture Type, Bulb Location and Ambient Temperature.

ITEM NUMBER SUFFIX CODES

STYLE NUMBER	COLOR	NECK
20010 = Acrylic	CL = CLEAR	4F = 3.91" Fitter 4T = 3.94" Twist Lock XX = Customized

12" Smooth Acrylic

DESCRIPTION

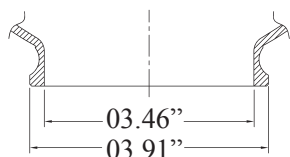
Norton Industries smooth spheres are designed for commercial and residential post top and pendant applications and are available with fitter neck, twist lock neck or neckless openings.

MATERIALS

- **Acrylic** - UV resistant with continuous operating temperature up to 90°C and transmittance of 92% (application dependent). Acrylic spheres are available in clear, white, bronze or smoke.
- **LD Acrylic (Visual Comfort)** - UV resistant with continuous operating temperature up to 90°C and transmittance of 90% to 94% (application dependent).

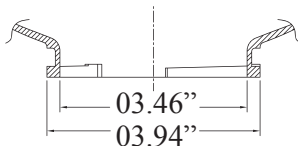


FITTER NECK (F)



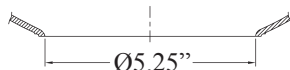
ITEM NO.	DIA (SPHERE)	ID (NECK)	OD (NECK)	MATERIAL	COLOR
20012-CL-4F	12"	3.46"	3.91"	Acrylic	Clear
20012-WH-4F	12"	3.46"	3.91"	Acrylic	White
20012-BR-4F	12"	3.46"	3.91"	Acrylic	Bronze
20012-SM-4F	12"	3.46"	3.91"	Acrylic	Smoke
20012-LD-4F	12"	3.46"	3.91"	LD Acrylic	VC Frost

TWIST LOCK (T)



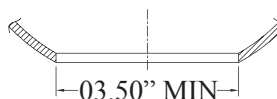
ITEM NO.	DIA (SPHERE)	ID (NECK)	OD (NECK)	MATERIAL	COLOR
20012-CL-4T	12"	3.46"	3.94"	Acrylic	Clear
20012-WH-4T	12"	3.46"	3.94"	Acrylic	White
20012-BR-4T	12"	3.46"	3.94"	Acrylic	Bronze
20012-SM-4T	12"	3.46"	3.94"	Acrylic	Smoke
20012-LD-4T	12"	3.46"	3.94"	LD Acrylic	VC Frost

NECKLESS (N)



ITEM NO.	DIA (SPHERE)	ID (NECK)	OD (NECK)	MATERIAL	COLOR
20012-CL-5N	12"	5.25"	N/A	Acrylic	Clear
20012-WH-5N	12"	5.25"	N/A	Acrylic	White
20012-BR-5N	12"	5.25"	N/A	Acrylic	Bronze
20012-SM-5N	12"	5.25"	N/A	Acrylic	Smoke
20012-LD-5N	12"	5.25"	N/A	LD Acrylic	VC Frost

CUSTOM (XX)



CUSTOM OPENING

See ACCESSORIES section for all optional attachments



ITEM NO.	DIA (SPHERE)	MIN (OPENING)	MAX (OPENING)	MATERIAL	COLOR
20012-CL-XX	12"	3.50"	9.25"	Acrylic	Clear
20012-WH-XX	12"	3.50"	9.25"	Acrylic	White
20012-BR-XX	12"	3.50"	9.25"	Acrylic	Bronze
20012-SM-XX	12"	3.50"	9.25"	Acrylic	Smoke
20012-LD-XX	12"	3.50"	9.25"	LD Acrylic	VC Frost

Dimensions are nominal

OPTIONAL ACCESSORIES

Aluminum Neck Fitters



98005-A
98007-A

Plastic Neck Fitters



98006-P

External Heat Shields



96005-BLK
96005-WHT

Internal Heat Shields



96104-A

MAXIMUM TEMPERATURES

No warranty or guarantee is expressed or implied as only the user can determine the suitability of a product for his or her purpose.
Maximum working temperature is 90° C for Acrylic and between 100° C and 125° C for Polycarbonates, depending on products chosen.
Actual wattage ratings are influenced by many factors including Fixture Type, Bulb Location and Ambient Temperature.

ITEM NUMBER SUFFIX CODES

STYLE NUMBER	COLOR	NECK
20012 = Acrylic	CL = CLEAR WH = WHITE BR = BRONZE SM = SMOKE LD = VC FROST	4F = 3.91" Fitter 4T = 3.94" Twist Lock 5N = 5.25" Neckless Opening XX = Customized

12" Smooth Polycarbonate

DESCRIPTION

Norton Industries smooth spheres are designed for commercial and residential post top and pendant applications and are available with fitter neck or neckless openings.

MATERIALS

- **Polycarbonate** - UV stabilized with continuous operating temperature of 100°C to 125°C and high impact resistance down to -40°C, transmittance of 88% (application dependent). Polycarbonate spheres are available in clear, white, bronze or smoke.



CUSTOM (XX)



ITEM NO.	DIA (SPHERE)	MIN (OPENING)	MAX (OPENING)	MATERIAL	COLOR
10012-CL-XX	12"	4.13"	8.00"	Polycarbonate	Clear
10012-WH-XX	12"	4.13"	8.00"	Polycarbonate	White
10012-BR-XX	12"	4.13"	8.00"	Polycarbonate	Bronze
10012-SM-XX	12"	4.13"	8.00"	Polycarbonate	Smoke

OPTIONAL ACCESSORIES

Aluminum Neck Fitters



98004-A
98007-A

Plastic Neck Fitters



98006-P

External Heat Shields



96005-BLK
96005-WHT

Internal Heat Shields



96104-A

MAXIMUM TEMPERATURES

No warranty or guarantee is expressed or implied as only the user can determine the suitability of a product for his or her purpose. Maximum working temperature is 90° C for Acrylic and between 100° C and 125° C for Polycarbonates, depending on products chosen. Actual wattage ratings are influenced by many factors including Fixture Type, Bulb Location and Ambient Temperature.

ITEM NUMBER SUFFIX CODES

STYLE NUMBER	COLOR	NECK
10012 = Polycarbonate	CL = CLEAR WH = WHITE BR = BRONZE SM = SMOKE	XX = Customized

12" Prismatic Acrylic

DESCRIPTION

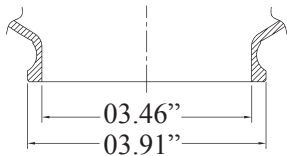
Norton Industries prismatic spheres are designed for commercial and residential post top and pendant applications and are available with fitter neck, twist lock neck or neckless openings.

MATERIALS

- **Acrylic** - UV resistant with continuous operating temperature up to 90°C and transmittance of 92% (application dependent). Acrylic spheres are available in clear.

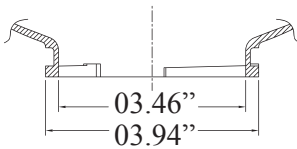


FITTER NECK (F)



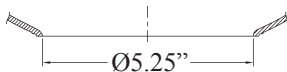
ITEM NO.	DIA (SPHERE)	ID (NECK)	OD (NECK)	MATERIAL	COLOR
21012-CL-4F	12"	3.46"	3.91"	Acrylic	Clear

TWIST LOCK (T)



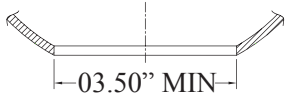
ITEM NO.	DIA (SPHERE)	ID (NECK)	OD (NECK)	MATERIAL	COLOR
21012-CL-4T	12"	3.46"	3.94"	Acrylic	Clear

NECKLESS (N)



ITEM NO.	DIA (SPHERE)	ID (NECK)	OD (NECK)	MATERIAL	COLOR
21012-CL-5N	12"	5.25"	N/A	Acrylic	Clear

CUSTOM (XX)



CUSTOM OPENING

See ACCESSORIES section for all optional attachments



ITEM NO.	DIA (SPHERE)	MIN (OPENING)	MAX (OPENING)	MATERIAL	COLOR
21012-CL-XX	12"	3.50"	8.00"	Acrylic	Clear

Dimensions are nominal

OPTIONAL ACCESSORIES

Aluminum Neck Fitters



98005-A

Plastic Neck Fitters



98006-P

External Heat Shields



96005-BLK
96005-WHT

Internal Heat Shields



96104-A

MAXIMUM TEMPERATURES

No warranty or guarantee is expressed or implied as only the user can determine the suitability of a product for his or her purpose.
Maximum working temperature is 90° C for Acrylic and between 100° C and 125° C for Polycarbonates, depending on products chosen.
Actual wattage ratings are influenced by many factors including Fixture Type, Bulb Location and Ambient Temperature.

ITEM NUMBER SUFFIX CODES

STYLE NUMBER	COLOR	NECK
21012 = Acrylic	CL = CLEAR	4F = 3.91" Fitter 4T = 3.94" Twist Lock 5N = 5.25" Twist Lock XX = Customized

12" Smooth Acrylic

DESCRIPTION

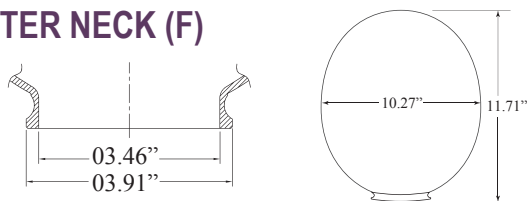
Norton Industries smooth ovaloids are designed for commercial and residential post top and pendant applications and are available with fitter neck, twist lock neck, neckless or custom openings.

MATERIALS

- **Acrylic** - UV resistant with continuous operating temperature up to 90°C and transmittance of 92% (application dependent). Acrylic ovaloids are available in clear or white.
- **LD Acrylic (Visual Comfort)** - UV resistant with continuous operating temperature up to 90°C and transmittance of 90% to 94% (application dependent).

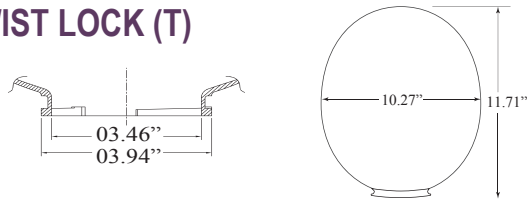


FITTER NECK (F)



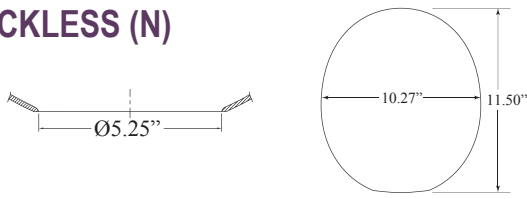
ITEM NO.	HEIGHT	WIDTH	ID (NECK)	OD (NECK)	MATERIAL	COLOR
20912-CL-4F	11.71"	10.27"	3.46"	3.91"	Acrylic	Clear
20912-WH-4F	11.71"	10.27"	3.46"	3.91"	Acrylic	White
20912-LD-4F	11.71"	10.27"	3.46"	3.91"	LD Acrylic	VC Frost

TWIST LOCK (T)



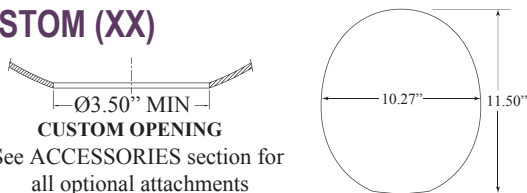
ITEM NO.	HEIGHT	WIDTH	ID (NECK)	OD (NECK)	MATERIAL	COLOR
20912-CL-4T	11.71"	10.27"	3.46"	3.94"	Acrylic	Clear
20912-WH-4T	11.71"	10.27"	3.46"	3.94"	Acrylic	White
20912-LD-4T	11.71"	10.27"	3.46"	3.94"	LD Acrylic	VC Frost

NECKLESS (N)



ITEM NO.	HEIGHT	WIDTH	ID (NECK)	OD (NECK)	MATERIAL	COLOR
20912-CL-5N	11.50"	10.27"	5.25"	N/A	Acrylic	Clear
20912-WH-5N	11.50"	10.27"	5.25"	N/A	Acrylic	White
20912-LD-5N	11.50"	10.27"	5.25"	N/A	LD Acrylic	VC Frost

CUSTOM (XX)



ITEM NO.	HEIGHT	WIDTH	MIN (OPENING)	MAX (OPENING)	MATERIAL	COLOR
20912-CL-XX	11.50"	10.27"	3.50"	N/A	Acrylic	Clear
20912-WH-XX	11.50"	10.27"	3.50"	N/A	Acrylic	White
20912-LD-XX	11.50"	10.27"	3.50"	N/A	LD Acrylic	VC Frost

MAXIMUM TEMPERATURES

No warranty or guarantee is expressed or implied as only the user can determine the suitability of a product for his or her purpose.

Maximum working temperature is 90° C for Acrylic depending on products chosen.

Actual wattage ratings are influenced by many factors including Fixture Type, Bulb Location and Ambient Temperature.

ITEM NUMBER SUFFIX CODES

STYLE NUMBER	COLOR	NECK
20912 = Acrylic	CL = CLEAR WH = WHITE LD = VC FROST	4F= 3.91" Fitter 4T= 3.94" Twist Lock 5N= 5.25" Neckless Opening XX= Customized

Dimensions are nominal

12" Prismatic Acrylic

DESCRIPTION

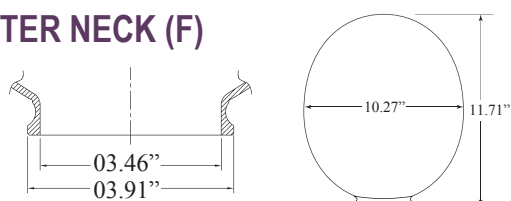
Norton Industries prismatic ovaloids are designed for commercial and residential post top and pendant applications and are available with fitter neck, twist lock neck, neckless or custom openings.

MATERIALS

- **Acrylic** - UV resistant with continuous operating temperature up to 90°C and transmittance of 92% (application dependent). Acrylic ovaloids are available in clear.

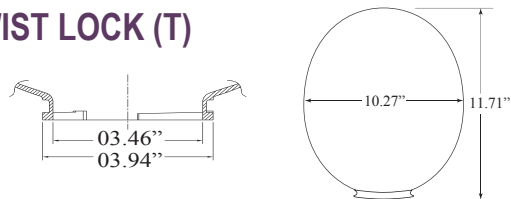


FITTER NECK (F)



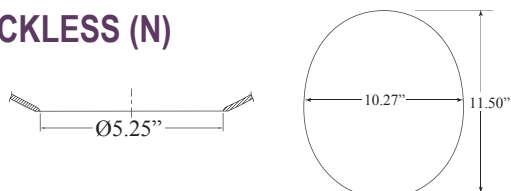
ITEM NO.	HEIGHT	WIDTH	ID (NECK)	OD (NECK)	MATERIAL	COLOR
21312-CL-4F	11.71"	10.27"	3.46"	3.91"	Acrylic	Clear

TWIST LOCK (T)



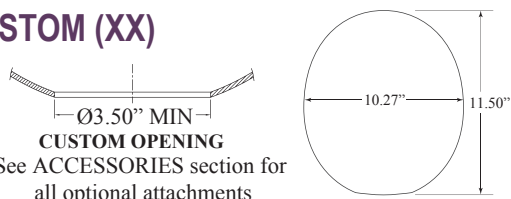
ITEM NO.	HEIGHT	WIDTH	ID (NECK)	OD (NECK)	MATERIAL	COLOR
21312-CL-4T	11.71"	10.27"	3.46"	3.94"	Acrylic	Clear

NECKLESS (N)



ITEM NO.	HEIGHT	WIDTH	ID (NECK)	OD (NECK)	MATERIAL	COLOR
21312-CL-5N	11.50"	10.27"	5.25"	N/A	Acrylic	Clear

CUSTOM (XX)



CUSTOM OPENING
See ACCESSORIES section for
all optional attachments

ITEM NO.	HEIGHT	WIDTH	MIN (OPENING)	MAX (OPENING)	MATERIAL	COLOR
21312-CL-XX	11.50"	10.27"	3.50"	N/A	Acrylic	Clear

MAXIMUM TEMPERATURES

No warranty or guarantee is expressed or implied as only the user can determine the suitability of a product for his or her purpose.

Maximum working temperature is 90° C for Acrylic depending on products chosen.

Actual wattage ratings are influenced by many factors including Fixture Type, Bulb Location and Ambient Temperature.

ITEM NUMBER SUFFIX CODES

STYLE NUMBER	COLOR	NECK
21312 = Acrylic	CL = CLEAR	4F= 3.91" Fitter 4T= 3.94" Twist Lock 5N= 5.25" Neckless Opening XX= Customized

Dimensions are nominal

14" Smooth Acrylic

DESCRIPTION

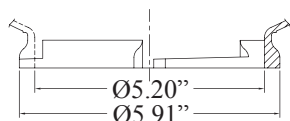
Norton Industries smooth spheres are designed for commercial and residential post top and pendant applications and are available with fitter neck, neckless and custom openings.

MATERIALS

- **Acrylic** - UV resistant with continuous operating temperature up to 90°C and transmittance of 92% (application dependent). Acrylic spheres are available in clear, white, bronze or smoke.
- **LD Acrylic (Visual Comfort)** - UV resistant with continuous operating temperature up to 90°C and transmittance of 90% to 94% (application dependent).

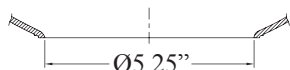


FITTER NECK (F)



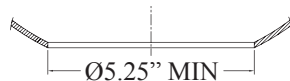
ITEM NO.	DIA (SPHERE)	ID (NECK)	OD (NECK)	MATERIAL	COLOR
20014-CL-6F	14"	5.20"	5.91"	Acrylic	Clear
20014-WH-6F	14"	5.20"	5.91"	Acrylic	White
20014-BR-6F	14"	5.20"	5.91"	Acrylic	Bronze
20014-SM-6F	14"	5.20"	5.91"	Acrylic	Smoke
20014-LD-6F	14"	5.20"	5.91"	LD Acrylic	VC Frost

NECKLESS (N)



ITEM NO.	DIA (SPHERE)	ID (NECK)	OD (NECK)	MATERIAL	COLOR
20014-CL-5N	14"	5.25"	N/A	Acrylic	Clear
20014-WH-5N	14"	5.25"	N/A	Acrylic	White
20014-BR-5N	14"	5.25"	N/A	Acrylic	Bronze
20014-SM-5N	14"	5.25"	N/A	Acrylic	Smoke
20014-LD-5N	14"	5.25"	N/A	LD Acrylic	VC Frost

CUSTOM (XX)



CUSTOM OPENING

See ACCESSORIES section for all optional attachments



ITEM NO.	DIA (SPHERE)	MIN (OPENING)	MAX (OPENING)	MATERIAL	COLOR
20014-CL-XX	14"	5.25"	9.25"	Acrylic	Clear
20014-WH-XX	14"	5.25"	9.25"	Acrylic	White
20014-BR-XX	14"	5.25"	9.25"	Acrylic	Bronze
20014-SM-XX	14"	5.25"	9.25"	Acrylic	Smoke
20014-LD-XX	14"	5.25"	9.25"	LD Acrylic	VC Frost

OPTIONAL ACCESSORIES

Aluminum Neck Fitters



98007-A
98007.5-A

Plastic Neck Fitters



98008-P
98008-PSPEC-WHT
98008-PSPEC-BLK

External Heat Shields



96005-BLK
96005-WHT

Internal Heat Shields



96104-A

Dimensions are nominal

MAXIMUM TEMPERATURES

No warranty or guarantee is expressed or implied as only the user can determine the suitability of a product for his or her purpose.

Maximum working temperature is 90° C for Acrylic and between 100° C and 125° C for Polycarbonates, depending on products chosen.

Actual wattage ratings are influenced by many factors including Fixture Type, Bulb Location and Ambient Temperature.

ITEM NUMBER SUFFIX CODES

STYLE NUMBER	COLOR	NECK
20014 = Acrylic	CL = CLEAR WH = WHITE BR = BRONZE SM = SMOKE LD = VC FROST	6F = 5.91" Fitter 5N = 5.25" Neckless Opening XX= Customized

14" Smooth Polycarbonate

DESCRIPTION

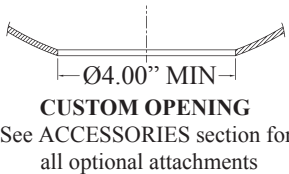
Norton Industries smooth spheres are designed for commercial and residential post top and pendant applications and are available with custom neckless openings.

MATERIALS

- **Polycarbonate** - UV stabilized with continuous operating temperature of 100°C to 125°C and high impact resistance down to -40°C, transmittance of 88% (application dependent). Polycarbonate spheres are available in clear, white, bronze or smoke.



CUSTOM (XX)



ITEM NO.	DIA (SPHERE)	MIN (OPENING)	MAX (OPENING)	MATERIAL	COLOR
10014-CL-XX	14"	4.00"	9.25"	Polycarbonate	Clear
10014-WH-XX	14"	4.00"	9.25"	Polycarbonate	White
10014-BR-XX	14"	4.00"	9.25"	Polycarbonate	Bronze
10014-SM-XX	14"	4.00"	9.25"	Polycarbonate	Smoke

OPTIONAL ACCESSORIES

Aluminum Neck Fitters



98007-A
98007.5-A

Plastic Neck Fitters



98008-P



98008-PSPEC-WHT
98008-PSPEC-BLK

External Heat Shields



96005-BLK
96005-WHT

Internal Heat Shields



96104-A

MAXIMUM TEMPERATURES

No warranty or guarantee is expressed or implied as only the user can determine the suitability of a product for his or her purpose. Maximum working temperature is 90° C for Acrylic and between 100° C and 125° C for Polycarbonates, depending on products chosen. Actual wattage ratings are influenced by many factors including Fixture Type, Bulb Location and Ambient Temperature.

ITEM NUMBER SUFFIX CODES

STYLE NUMBER	COLOR	NECK
10014 = Polycarbonate	CL = CLEAR WH = WHITE BR = BRONZE SM = SMOKE	XX = Customized

16" Smooth Acrylic

DESCRIPTION

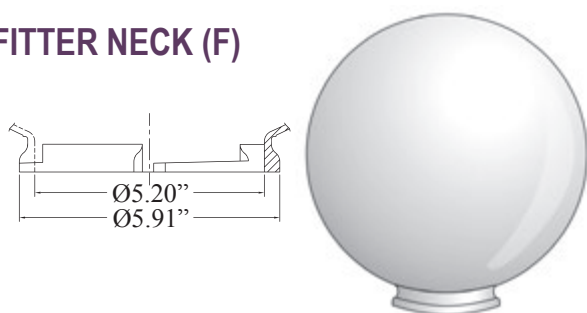
Norton Industries smooth spheres are designed for commercial and residential post top and pendant applications and are available with fitter neck, neckless and custom openings.

MATERIALS

- **Acrylic** - UV resistant with continuous operating temperature up to 90°C and transmittance of 92% (application dependent). Acrylic streetlamps are available in clear, white, bronze or smoke.
- **LD Acrylic (Visual Comfort)** - UV resistant with continuous operating temperature up to 90°C and transmittance of 90% to 94% (application dependent).

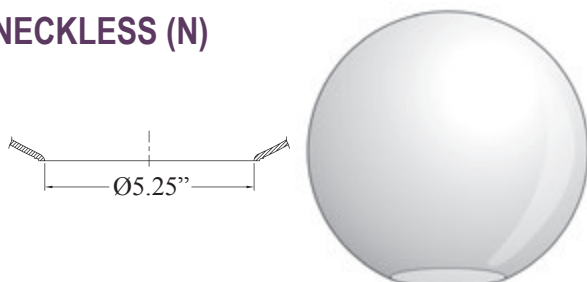


FITTER NECK (F)



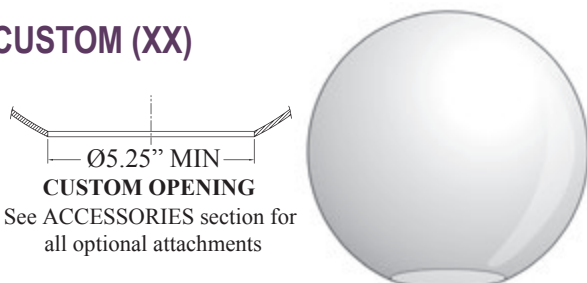
ITEM NO.	DIA (SPHERE)	ID (NECK)	OD (NECK)	MATERIAL	COLOR
20016-CL-6F	16"	5.20"	5.91"	Acrylic	Clear
20016-WH-6F	16"	5.20"	5.91"	Acrylic	White
20016-BR-6F	16"	5.20"	5.91"	Acrylic	Bronze
20016-SM-6F	16"	5.20"	5.91"	Acrylic	Smoke
20016-LD-6F	16"	5.20"	5.91"	LD Acrylic	VC Frost

NECKLESS (N)



ITEM NO.	DIA (SPHERE)	ID (NECK)	OD (NECK)	MATERIAL	COLOR
20016-CL-5N	16"	5.25"	N/A	Acrylic	Clear
20016-WH-5N	16"	5.25"	N/A	Acrylic	White
20016-BR-5N	16"	5.25"	N/A	Acrylic	Bronze
20016-SM-5N	16"	5.25"	N/A	Acrylic	Smoke
20016-LD-5N	16"	5.25"	N/A	LD Acrylic	VC Frost

CUSTOM (XX)



ITEM NO.	DIA (SPHERE)	MIN (OPENING)	MAX (OPENING)	MATERIAL	COLOR
20016-CL-XX	16"	5.25"	10.00"	Acrylic	Clear
20016-WH-XX	16"	5.25"	10.00"	Acrylic	White
20016-BR-XX	16"	5.25"	10.00"	Acrylic	Bronze
20016-SM-XX	16"	5.25"	10.00"	Acrylic	Smoke
20016-LD-XX	16"	5.25"	10.00"	LD Acrylic	VC Frost

OPTIONAL ACCESSORIES

Aluminum Neck Fitters



98007-A
98007.5-A

Plastic Neck Fitters



98008-P



98008-PSPEC-WHT
98008-PSPEC-BLK

External Heat Shields



96005-BLK
96005-WHT

Internal Heat Shields



96104-A

Dimensions are nominal

MAXIMUM TEMPERATURES

No warranty or guarantee is expressed or implied as only the user can determine the suitability of a product for his or her purpose.

Maximum working temperature is 90° C for Acrylic and between 100° C and 125° C for Polycarbonates, depending on products chosen.

Actual wattage ratings are influenced by many factors including Fixture Type, Bulb Location and Ambient Temperature.

ITEM NUMBER SUFFIX CODES

STYLE NUMBER	COLOR	NECK
20016 = Acrylic	CL = CLEAR WH = WHITE BR = BRONZE SM = SMOKE LD = VC FROST	6F = 5.91" Fitter 5N = 5.25" Neckless Opening XX= Customized

16" Smooth Polycarbonate

DESCRIPTION

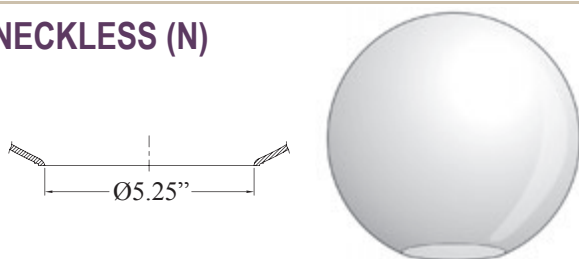
Norton Industries smooth spheres are designed for commercial and residential post top and pendant applications and are available with neckless and custom openings.

MATERIALS

- **Polycarbonate** - UV stabilized with continuous operating temperature of 100°C to 125°C and high impact resistance down to -40°C, transmittance of 88% (application dependent). Polycarbonate streetlamps are available in clear, white, bronze or smoke.

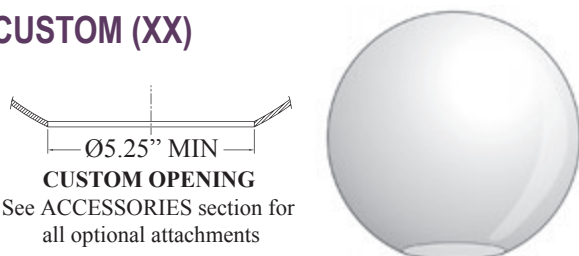


NECKLESS (N)



ITEM NO.	DIA (SPHERE)	ID (NECK)	OD (NECK)	MATERIAL	COLOR
10016-CL-5N	16"	5.25"	N/A	Polycarbonate	Clear
10016-WH-5N	16"	5.25"	N/A	Polycarbonate	White
10016-BR-5N	16"	5.25"	N/A	Polycarbonate	Bronze
10016-SM-5N	16"	5.25"	N/A	Polycarbonate	Smoke

CUSTOM (XX)



ITEM NO.	DIA (SPHERE)	MIN (OPENING)	MAX (OPENING)	MATERIAL	COLOR
10016-CL-XX	16"	5.25"	11.00"	Polycarbonate	Clear
10016-WH-XX	16"	5.25"	11.00"	Polycarbonate	White
10016-BR-XX	16"	5.25"	11.00"	Polycarbonate	Bronze
10016-SM-XX	16"	5.25"	11.00"	Polycarbonate	Smoke

OPTIONAL ACCESSORIES

Aluminum Neck Fitters



98007-A
98007.5-A

Plastic Neck Fitters



98008-P
98008-PSPEC-WHT
98008-PSPEC-BLK

External Heat Shields



96005-BLK
96005-WHT

Internal Heat Shields



96104-A

MAXIMUM TEMPERATURES

No warranty or guarantee is expressed or implied as only the user can determine the suitability of a product for his or her purpose.

Maximum working temperature is 90° C for Acrylic and between 100° C and 125° C for Polycarbonates, depending on products chosen.

Actual wattage ratings are influenced by many factors including Fixture Type, Bulb Location and Ambient Temperature.

ITEM NUMBER SUFFIX CODES

STYLE NUMBER	COLOR	NECK
10016 = Polycarbonate	CL = CLEAR WH = WHITE BR = BRONZE SM = SMOKE	5N = 5.25" Neckless Opening XX = Customized

Dimensions are nominal

16" Prismatic Acrylic

DESCRIPTION

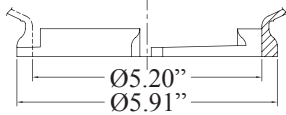
Norton Industries prismatic spheres are designed for commercial and residential post top and pendant applications and are available with fitter neck and neckless openings.

MATERIALS

- **Acrylic** - UV resistant with continuous operating temperature up to 90°C and transmittance of 92% (application dependent). Acrylic spheres are available in clear.

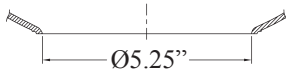


FITTER NECK (F)



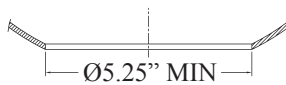
ITEM NO.	DIA (SPHERE)	ID (NECK)	OD (NECK)	MATERIAL	COLOR
21016-CL-6F	16"	5.20"	5.91"	Acrylic	Clear

NECKLESS (N)



ITEM NO.	DIA (SPHERE)	ID (NECK)	OD (NECK)	MATERIAL	COLOR
21016-CL-5N	16"	5.25"	N/A	Acrylic	Clear

CUSTOM (XX)



CUSTOM OPENING
See ACCESSORIES section for
all optional attachments



ITEM NO.	DIA (SPHERE)	MIN (OPENING)	MAX (OPENING)	MATERIAL	COLOR
21016-CL-XX	16"	5.25"	11.00"	Acrylic	Clear

OPTIONAL ACCESSORIES

Aluminum Neck Fitters



98007-A
98007.5-A

Plastic Neck Fitters



98008-P



98008-PSPEC-WHT
98008-PSPEC-BLK

External Heat Shields



96005-BLK
96005-WHT

Internal Heat Shields



96104-A

Dimensions are nominal

MAXIMUM TEMPERATURES

No warranty or guarantee is expressed or implied as only the user can determine the suitability of a product for his or her purpose.

Maximum working temperature is 90° C for Acrylic and between 100° C and 125° C for Polycarbonates, depending on products chosen.

Actual wattage ratings are influenced by many factors including Fixture Type, Bulb Location and Ambient Temperature.

ITEM NUMBER SUFFIX CODES

STYLE NUMBER	COLOR	NECK
21016 = Acrylic	CL = CLEAR	6F = 5.91" Fitter 5N = 5.25" Neckless Opening XX = Customized

18" Smooth Acrylic

DESCRIPTION

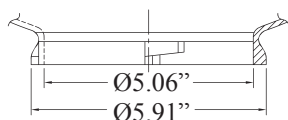
Norton Industries smooth spheres are designed for commercial and residential post top and pendant applications and are available with fitter neck, neckless and custom openings.

MATERIALS

- **Acrylic** - UV resistant with continuous operating temperature up to 90°C and transmittance of 92% (application dependent). Acrylic spheres are available in clear, white, bronze or smoke.
- **LD Acrylic (Visual Comfort)** - UV resistant with continuous operating temperature up to 90°C and transmittance of 90% to 94% (application dependent).

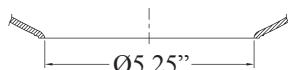


FITTER NECK (F)



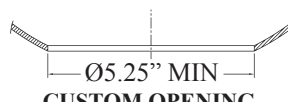
ITEM NO.	DIA (SPHERE)	ID (NECK)	OD (NECK)	MATERIAL	COLOR
20018-CL-6F	18"	5.06"	5.91"	Acrylic	Clear
20018-WH-6F	18"	5.06"	5.91"	Acrylic	White
20018-BR-6F	18"	5.06"	5.91"	Acrylic	Bronze
20018-SM-6F	18"	5.06"	5.91"	Acrylic	Smoke
20018-LD-6F	18"	5.06"	5.91"	LD Acrylic	VC Frost

NECKLESS (N)



ITEM NO.	DIA (SPHERE)	ID (NECK)	OD (NECK)	MATERIAL	COLOR
20018-CL-5N	18"	5.25"	N/A	Acrylic	Clear
20018-WH-5N	18"	5.25"	N/A	Acrylic	White
20018-BR-5N	18"	5.25"	N/A	Acrylic	Bronze
20018-SM-5N	18"	5.25"	N/A	Acrylic	Smoke
20018-LD-5N	18"	5.25"	N/A	LD Acrylic	VC Frost

CUSTOM (XX)



See ACCESSORIES section for all optional attachments



ITEM NO.	DIA (SPHERE)	MIN (OPENING)	MAX (OPENING)	MATERIAL	COLOR
20018-CL-XX	18"	5.25"	13.00"	Acrylic	Clear
20018-WH-XX	18"	5.25"	13.00"	Acrylic	White
20018-BR-XX	18"	5.25"	13.00"	Acrylic	Bronze
20018-SM-XX	18"	5.25"	13.00"	Acrylic	Smoke
20018-LD-XX	18"	5.25"	13.00"	LD Acrylic	VC Frost

OPTIONAL ACCESSORIES

Aluminum Neck Fitters



98007-A
98007.5-A
98009-A
98010-A

Plastic Neck Fitters



98008-P
98008-PSPEC-WHT
98008-PSPEC-BLK

External Heat Shields



96007-BLK
96007-WHT

Internal Heat Shields



96106-A

Dimensions are nominal

MAXIMUM TEMPERATURES

No warranty or guarantee is expressed or implied as only the user can determine the suitability of a product for his or her purpose.

Maximum working temperature is 90° C for Acrylic and between 100° C and 125° C for Polycarbonates, depending on products chosen.

Actual wattage ratings are influenced by many factors including Fixture Type, Bulb Location and Ambient Temperature.

ITEM NUMBER SUFFIX CODES

STYLE NUMBER	COLOR	NECK
20018 = Acrylic	CL = CLEAR WH = WHITE BR = BRONZE SM = SMOKE LD = VC FROST	6F = 5.91" Fitter 5N = 5.25" Neckless Opening XX= Customized

18" Smooth Polycarbonate

DESCRIPTION

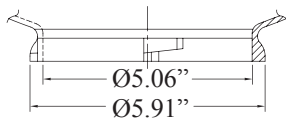
Norton Industries smooth spheres are designed for commercial and residential post top and pendant applications and are available with fitter neck, neckless and custom openings.

MATERIALS

- **Polycarbonate** - UV stabilized with continuous operating temperature of 100°C to 125°C and high impact resistance down to -40°C, transmittance of 88% (application dependent). Polycarbonate spheres are available in clear, white, bronze or smoke.

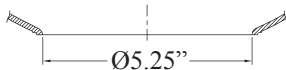


FITTER NECK (F)



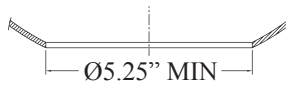
ITEM NO.	DIA (SPHERE)	ID (NECK)	OD (NECK)	MATERIAL	COLOR
10018-CL-6F	18"	5.06"	5.91"	Polycarbonate	Clear
10018-WH-6F	18"	5.06"	5.91"	Polycarbonate	White
10018-BR-6F	18"	5.06"	5.91"	Polycarbonate	Bronze
10018-SM-6F	18"	5.06"	5.91"	Polycarbonate	Smoke

NECKLESS (N)



ITEM NO.	DIA (SPHERE)	ID (NECK)	OD (NECK)	MATERIAL	COLOR
10018-CL-5N	18"	5.25"	N/A	Polycarbonate	Clear
10018-WH-5N	18"	5.25"	N/A	Polycarbonate	White
10018-BR-5N	18"	5.25"	N/A	Polycarbonate	Bronze
10018-SM-5N	18"	5.25"	N/A	Polycarbonate	Smoke

CUSTOM (XX)



CUSTOM OPENING

See ACCESSORIES section for all optional attachments



ITEM NO.	DIA (SPHERE)	MIN (OPENING)	MAX (OPENING)	MATERIAL	COLOR
10018-CL-XX	18"	5.25"	13.00"	Polycarbonate	Clear
10018-WH-XX	18"	5.25"	13.00"	Polycarbonate	White
10018-BR-XX	18"	5.25"	13.00"	Polycarbonate	Bronze
10018-SM-XX	18"	5.25"	13.00"	Polycarbonate	Smoke

OPTIONAL ACCESSORIES

Aluminum Neck Fitters



98007-A
98007.5-A
98009-A
98010-A

Plastic Neck Fitters



98008-P
98008-PSPEC-WHT
98008-PSPEC-BLK

External Heat Shields



96007-BLK
96007-WHT

Internal Heat Shields



96106-A

Dimensions are nominal

MAXIMUM TEMPERATURES

No warranty or guarantee is expressed or implied as only the user can determine the suitability of a product for his or her purpose.

Maximum working temperature is 90° C for Acrylic and between 100° C and 125° C for Polycarbonates, depending on products chosen.

Actual wattage ratings are influenced by many factors including Fixture Type, Bulb Location and Ambient Temperature.

ITEM NUMBER SUFFIX CODES

STYLE NUMBER	COLOR	NECK
10018 = Polycarbonate	CL = CLEAR WH = WHITE BR = BRONZE SM = SMOKE	6F = 5.91" Fitter 5N = 5.25" Neckless Opening XX= Customized

18" Prismatic Acrylic & Polycarbonate

DESCRIPTION

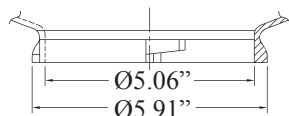
Norton Industries prismatic spheres are designed for commercial and residential post top and pendant applications and are available with fitter neck and neckless openings.

MATERIALS

- **Polycarbonate** - UV stabilized with continuous operating temperature of 100°C to 125°C and high impact resistance down to -40°C, transmittance of 88% (application dependent). Polycarbonate spheres are available in clear.
- **Acrylic** - UV resistant with continuous operating temperature up to 90°C and transmittance of 92% (application dependent). Acrylic spheres are available in clear.

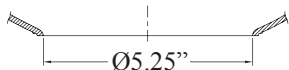


FITTER NECK (F)



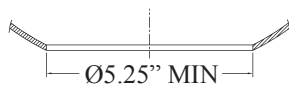
ITEM NO.	DIA (SPHERE)	ID (NECK)	OD (NECK)	MATERIAL	COLOR
21018-CL-6F	18"	5.06"	5.91"	Acrylic	Clear
11018-CL-6F	18"	5.06"	5.91"	Polycarbonate	Clear

NECKLESS (N)



ITEM NO.	DIA (SPHERE)	ID (NECK)	OD (NECK)	MATERIAL	COLOR
21018-CL-5N	18"	5.25"	N/A	Acrylic	Clear
11018-CL-5N	18"	5.25"	N/A	Polycarbonate	Clear

CUSTOM (XX)



CUSTOM OPENING
See ACCESSORIES section for
all optional attachments



ITEM NO.	DIA (SPHERE)	MIN (OPENING)	MAX (OPENING)	MATERIAL	COLOR
21018-CL-XX	18"	5.25"	13.00"	Acrylic	Clear
11018-CL-XX	18"	5.25"	13.00"	Polycarbonate	Clear

Dimensions are nominal

OPTIONAL ACCESSORIES

Aluminum Neck Fitters



98007-A
98007.5-A
98009-A
98010-A

Plastic Neck Fitters



98008-P



98008-PSPEC-WHT
98008-PSPEC-BLK

External Heat Shields



96007-BLK
96007-WHT

Internal Heat Shields



96106-A

MAXIMUM TEMPERATURES

No warranty or guarantee is expressed or implied as only the user can determine the suitability of a product for his or her purpose.

Maximum working temperature is 90° C for Acrylic and between 100° C and 125° C for Polycarbonates, depending on products chosen.

Actual wattage ratings are influenced by many factors including Fixture Type, Bulb Location and Ambient Temperature.

ITEM NUMBER SUFFIX CODES

STYLE NUMBER	COLOR	NECK
21018 = Acrylic 11018 = Polycarbonate	CL = CLEAR	6F = 5.91" Fitter 5N = 5.25" Twist Lock XX = Customized

20" Smooth Acrylic

DESCRIPTION

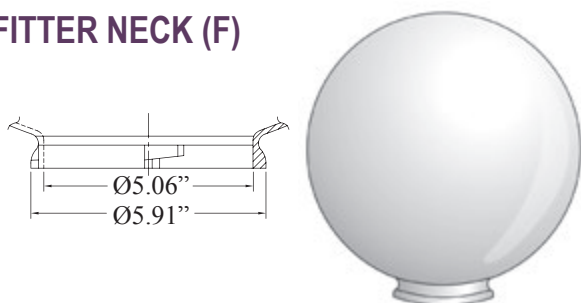
Norton Industries smooth spheres are designed for commercial and residential post top and pendant applications and are available with fitter neck and neckless openings.

MATERIALS

- **Acrylic** - UV resistant with continuous operating temperature up to 90°C and transmittance of 92% (application dependent). Acrylic spheres are available in clear, white, bronze or smoke.
- **LD Acrylic (Visual Comfort)** - UV resistant with continuous operating temperature up to 90°C and transmittance of 90% to 94% (application dependent).

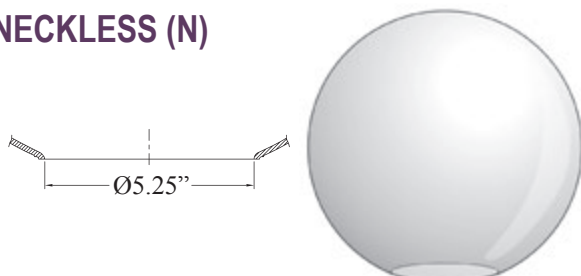


FITTER NECK (F)



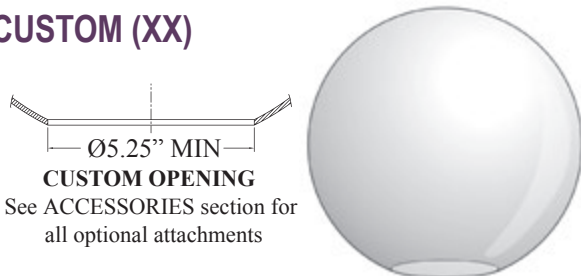
ITEM NO.	DIA (SPHERE)	ID (NECK)	OD (NECK)	MATERIAL	COLOR
20020-CL-6F	20"	5.06"	5.91"	Acrylic	Clear
20020-WH-6F	20"	5.06"	5.91"	Acrylic	White
20020-BR-6F	20"	5.06"	5.91"	Acrylic	Bronze
20020-SM-6F	20"	5.06"	5.91"	Acrylic	Smoke
20020-LD-6F	20"	5.06"	5.91"	LD Acrylic	VC Frost

NECKLESS (N)



ITEM NO.	DIA (SPHERE)	ID (NECK)	OD (NECK)	MATERIAL	COLOR
20020-CL-5N	20"	5.25"	N/A	Acrylic	Clear
20020-WH-5N	20"	5.25"	N/A	Acrylic	White
20020-BR-5N	20"	5.25"	N/A	Acrylic	Bronze
20020-SM-5N	20"	5.25"	N/A	Acrylic	Smoke
20020-LD-5N	20"	5.25"	N/A	LD Acrylic	VC Frost

CUSTOM (XX)



ITEM NO.	DIA (SPHERE)	MIN (OPENING)	MAX (OPENING)	MATERIAL	COLOR
20020-CL-XX	20"	5.25"	13.00"	Acrylic	Clear
20020-WH-XX	20"	5.25"	13.00"	Acrylic	White
20020-BR-XX	20"	5.25"	13.00"	Acrylic	Bronze
20020-SM-XX	20"	5.25"	13.00"	Acrylic	Smoke
20020-LD-XX	20"	5.25"	13.00"	LD Acrylic	VC Frost

OPTIONAL ACCESSORIES

Aluminum Neck Fitters



98007-A
98007.5-A
98009-A
98010-A

Plastic Neck Fitters



98008-P
98008-PSPEC-WHT
98008-PSPEC-BLK

External Heat Shields



96007-BLK
96007-WHT

Internal Heat Shields



96106-A

Dimensions are nominal

MAXIMUM TEMPERATURES

No warranty or guarantee is expressed or implied as only the user can determine the suitability of a product for his or her purpose.

Maximum working temperature is 90° C for Acrylic and between 100° C and 125° C for Polycarbonates, depending on products chosen.

Actual wattage ratings are influenced by many factors including Fixture Type, Bulb Location and Ambient Temperature.

ITEM NUMBER SUFFIX CODES

STYLE NUMBER	COLOR	NECK
20020 = Acrylic	CL = CLEAR WH = WHITE BR = BRONZE SM = SMOKE LD = VC FROST	6F = 5.91" Fitter 5N = 5.25" Neckless Opening XX= Customized

20" Smooth Polycarbonate

DESCRIPTION

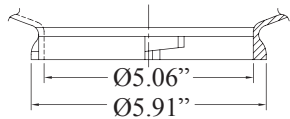
Norton Industries smooth spheres are designed for commercial and residential post top and pendant applications and are available with fitter neck and neckless openings.

MATERIALS

- **Polycarbonate** - UV stabilized with continuous operating temperature of 100°C to 125°C and high impact resistance down to -40°C, transmittance of 88% (application dependent). Polycarbonate spheres are available in clear, white, bronze or smoke.

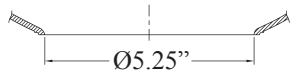


FITTER NECK (F)



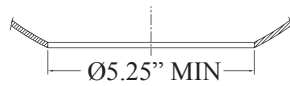
ITEM NO.	DIA (SPHERE)	ID (NECK)	OD (NECK)	MATERIAL	COLOR
10020-CL-6F	20"	5.06"	5.91"	Polycarbonate	Clear
10020-WH-6F	20"	5.06"	5.91"	Polycarbonate	White
10020-BR-6F	20"	5.06"	5.91"	Polycarbonate	Bronze
10020-SM-6F	20"	5.06"	5.91"	Polycarbonate	Smoke

NECKLESS (N)



ITEM NO.	DIA (SPHERE)	ID (NECK)	OD (NECK)	MATERIAL	COLOR
10020-CL-5N	20"	5.25"	N/A	Polycarbonate	Clear
10020-WH-5N	20"	5.25"	N/A	Polycarbonate	White
10020-BR-5N	20"	5.25"	N/A	Polycarbonate	Bronze
10020-SM-5N	20"	5.25"	N/A	Polycarbonate	Smoke

CUSTOM (XX)



CUSTOM OPENING

See ACCESSORIES section for all optional attachments



ITEM NO.	DIA (SPHERE)	MIN (OPENING)	MAX (OPENING)	MATERIAL	COLOR
10020-CL-XX	20"	5.25"	13.00"	Polycarbonate	Clear
10020-WH-XX	20"	5.25"	13.00"	Polycarbonate	White
10020-BR-XX	20"	5.25"	13.00"	Polycarbonate	Bronze
10020-SM-XX	20"	5.25"	13.00"	Polycarbonate	Smoke

OPTIONAL ACCESSORIES

Aluminum Neck Fitters



98007-A
98007.5-A
98009-A
98010-A

Plastic Neck Fitters



98008-P
98008-PSPEC-WHT
98008-PSPEC-BLK

External Heat Shields



96007-BLK
96007-WHT

Internal Heat Shields



96106-A

Dimensions are nominal

MAXIMUM TEMPERATURES

No warranty or guarantee is expressed or implied as only the user can determine the suitability of a product for his or her purpose.

Maximum working temperature is 90° C for Acrylic and between 100° C and 125° C for Polycarbonates, depending on products chosen.

Actual wattage ratings are influenced by many factors including Fixture Type, Bulb Location and Ambient Temperature.

ITEM NUMBER SUFFIX CODES

STYLE NUMBER	COLOR	NECK
10020 = Polycarbonate	CL = CLEAR WH = WHITE BR = BRONZE SM = SMOKE	6F = 5.91" Fitter 5N = 5.25" Neckless Opening XX= Customized

20" Prismatic Acrylic & Polycarbonate

DESCRIPTION

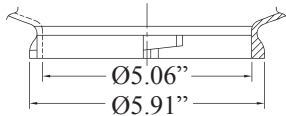
Norton Industries prismatic spheres are designed for commercial and residential post top and pendant applications and are available with fitter neck and neckless openings.

MATERIALS

- **Polycarbonate** - UV stabilized with continuous operating temperature of 100°C to 125°C and high impact resistance down to -40°C, transmittance of 88% (application dependent). Polycarbonate spheres are available in clear.
- **Acrylic** - UV resistant with continuous operating temperature up to 90°C and transmittance of 92% (application dependent). Acrylic spheres are available in clear.

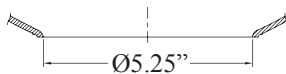


FITTER NECK (F)



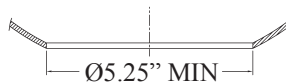
ITEM NO.	DIA (SPHERE)	ID (NECK)	OD (NECK)	MATERIAL	COLOR
21020-CL-6F	20"	5.06"	5.91"	Acrylic	Clear
11020-CL-6F	20"	5.06"	5.91"	Polycarbonate	Clear

NECKLESS (N)



ITEM NO.	DIA (SPHERE)	ID (NECK)	OD (NECK)	MATERIAL	COLOR
21020-CL-5N	20"	5.25"	N/A	Acrylic	Clear
11020-CL-5N	20"	5.25"	N/A	Polycarbonate	Clear

CUSTOM (XX)



CUSTOM OPENING
See ACCESSORIES section for
all optional attachments



ITEM NO.	DIA (SPHERE)	MIN (OPENING)	MAX (OPENING)	MATERIAL	COLOR
21020-CL-XX	20"	5.25"	13.00"	Acrylic	Clear
11020-CL-XX	20"	5.25"	13.00"	Polycarbonate	Clear

Dimensions are nominal

OPTIONAL ACCESSORIES

Aluminum Neck Fitters



98007-A
98007.5-A
98009-A
98010-A

Plastic Neck Fitters



98008-P



98008-PSPEC-WHT
98008-PSPEC-BLK

External Heat Shields



96007-BLK
96007-WHT

Internal Heat Shields



96106-A

MAXIMUM TEMPERATURES

No warranty or guarantee is expressed or implied as only the user can determine the suitability of a product for his or her purpose.

Maximum working temperature is 90° C for Acrylic and between 100° C and 125° C for Polycarbonates, depending on products chosen.

Actual wattage ratings are influenced by many factors including Fixture Type, Bulb Location and Ambient Temperature.

ITEM NUMBER SUFFIX CODES

STYLE NUMBER	COLOR	NECK
21020 = Acrylic 11020 = Polycarbonate	CL = CLEAR	6F = 5.91" Fitter 5N = 5.25" Neckless Opening XX = Customized

22" Smooth Acrylic

DESCRIPTION

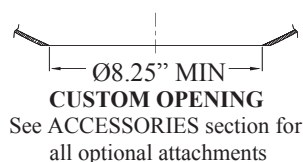
Norton Industries smooth spheres are designed for commercial and residential post top and pendant applications and are available with fitter neck and neckless openings.

MATERIALS

- **Acrylic** - UV resistant with continuous operating temperature up to 90°C and transmittance of 92% (application dependent). Acrylic spheres are available in clear or white.



CUSTOM (XX)



ITEM NO.	DIA (SPHERE)	MIN (OPENING)	MAX (OPENING)	MATERIAL	COLOR
20022-CL-XX	22"	8.25"	17.00"	Acrylic	Clear
20022-WH-XX	22"	8.25"	17.00"	Acrylic	White

OPTIONAL ACCESSORIES

Aluminum Neck Fitters



98010-A

External Heat Shields



96007-BLK
96007-WHT

Internal Heat Shields



96106-A

MAXIMUM TEMPERATURES

No warranty or guarantee is expressed or implied as only the user can determine the suitability of a product for his or her purpose.

Maximum working temperature is 90° C for Acrylic and between 100° C and 125° C for Polycarbonates, depending on products chosen.

Actual wattage ratings are influenced by many factors including Fixture Type, Bulb Location and Ambient Temperature.

ITEM NUMBER SUFFIX CODES

STYLE NUMBER	COLOR	NECK
20022 = Acrylic	CL = CLEAR WH = WHITE	XX= Customized

2 Piece Smooth Acrylic

DESCRIPTION

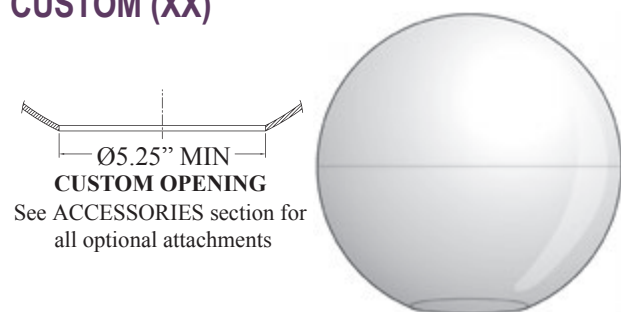
Norton Industries smooth spheres are designed for commercial and residential post top and pendant applications and are available with fitter neck and neckless openings.

MATERIALS

- **Acrylic** - UV resistant with continuous operating temperature up to 90°C and transmittance of 92% (application dependent). Acrylic spheres are available in clear, white, bronze or smoke.



CUSTOM (XX)



NOTE: 2 piece globes will have a seam at the equator. A reinforcement ring will be used inside neckless openings of 5.25" - 8.00". Some modifications possible upon request.

ITEM NO.	DIA (SPHERE)	MIN (OPENING)	MAX (OPENING)	MATERIAL	COLOR
60224-CL-XX	24"	5.25"	17.00"	Acrylic	Clear
60224-WH-XX	24"	5.25"	17.00"	Acrylic	White
60224-BR-XX	24"	5.25"	17.00"	Acrylic	Bronze
60227-CL-XX	27"	5.25"	17.00"	Acrylic	Clear
60227-WH-XX	27"	5.25"	17.00"	Acrylic	White
60227-BR-XX	27"	5.25"	17.00"	Acrylic	Bronze
60230-CL-XX	30"	5.25"	17.00"	Acrylic	Clear
60230-WH-XX	30"	5.25"	17.00"	Acrylic	White
60230-BR-XX	30"	5.25"	17.00"	Acrylic	Bronze
60236-CL-XX	36"	5.25"	17.00"	Acrylic	Clear
60236-WH-XX	36"	5.25"	17.00"	Acrylic	White
60236-BR-XX	36"	5.25"	17.00"	Acrylic	Bronze

OPTIONAL ACCESSORIES

Aluminum Neck Fitters



98007-A
98007.5-A
98009-A
98010-A

Plastic Neck Fitters



98008-P
98008-PSPEC-WHT
98008-PSPEC-BLK

External Heat Shields



96007-BLK
96007-WHT

Internal Heat Shields



96106-A

MAXIMUM TEMPERATURES

No warranty or guarantee is expressed or implied as only the user can determine the suitability of a product for his or her purpose.

Maximum working temperature is 90° C for Acrylic and between 100° C and 125° C for Polycarbonates, depending on products chosen.

Actual wattage ratings are influenced by many factors including Fixture Type, Bulb Location and Ambient Temperature.

ITEM NUMBER SUFFIX CODES

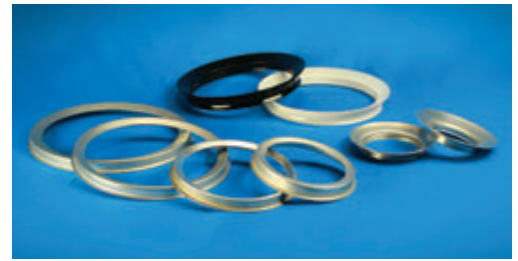
STYLE NUMBER	COLOR	NECK
602XX = Acrylic	CL = CLEAR WH = WHITE BR = BRONZE	XX= Customized

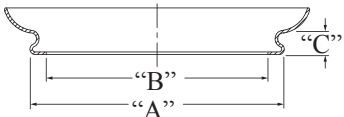
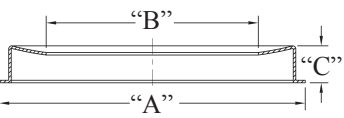
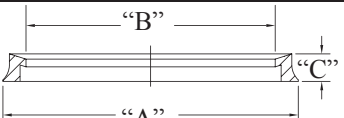
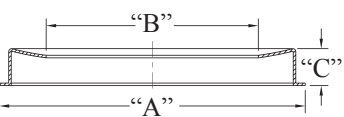
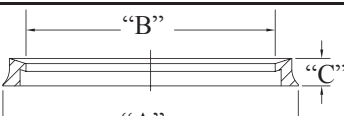
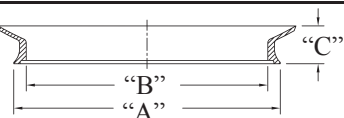
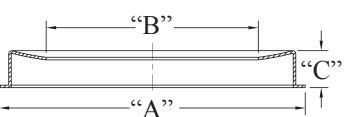
Dimensions are nominal

Neck Fitters

DESCRIPTION

Norton Industries neck fitters are designed to be used with commercial and residential spheres in post top and pendant applications. See chart for materials and colors available.




STYLE	ITEM NO.	A (NECK OD)	B (NECK ID)	C (HEIGHT)	MATERIAL	COLOR
	98003-A	3.10"	2.88"	.50"	Aluminum	Silver
	98004-A	3.89"	3.38"	.44"	Aluminum	Silver
	98005-A	5.00"	3.34"	.62"	Aluminum	Silver
	98006-P	6.00"	4.73"	.75"	Polycarbonate	Black
	98007-A	7.00"	5.69"	.63"	Aluminum	Silver
	98007.5-A	7.50"	6.00"	.81"	Aluminum	Silver
	98008-P	8.00"	6.85"	.75"	Polycarbonate	Black
	98008-PSPEC-WHT	8.00"	7.19"	1.14"	Polycarbonate	White
	98008-PSPEC-BLK	8.00"	7.19"	1.14"	Polycarbonate	Black
	98009-A	9.00"	7.50"	.62"	Aluminum	Silver
	98010-A	10.00"	8.25"	.69"	Aluminum	Silver

Split Neck Fitters

DESCRIPTION

Norton Industries split fitters are designed for commercial and residential applications for use with street lamps with 8F and 9F necks. The Split Fitter gives additional reinforcement to the structural integrity of the neck when securing to post tops. **Split Neck Fitters** are available in aluminum.



STYLE	ITEM NO.	DESCRIPTION	MATERIAL	COLOR
	98-SPLIT-8.5	Fits 8F Necks	Aluminum	Silver
	98-SPLIT-9	Fits 9F Necks	Aluminum	Silver

Dimensions are nominal